



Beginning DNA Group

Presentation: Working On Your DNA Match List - May 5, 2026

Kathy Bartera

Email: kbartera@yahoo.com

[www:GenealogyFriends.org](http://www.GenealogyFriends.org)

We will be having a live demo (various test sites) of the features you can use to help identify your matches. We only get matches when someone tests, unfortunately they don't just appear on your list. This is why we fish in all the ponds. If you're using your computer for this zoom, you can split your screen and follow along with me on your DNA match list.

WORKING ON YOUR DNA MATCH LIST

Linking your DNA (on Ancestry) to your tree: Make sure you have added yourself to your tree. Click the DNA tab at the top and select DNA Matches. Click on Summary Tab (on left). Click on DNA Settings (top right), scroll down to DNA and family tree linking, click the link icon next to "Link the Tree". Choose your family tree from the drop-down menu or create one. Select your name from the list of people in your tree.

Getting to your Match Page

At Ancestry on the Home Page click on DNA at the top of page. On the drop-down list click on Matches. Your list of matches will be shown. The top match on your list is always your closest relative who has tested with that company.

At My Heritage on the Home Page click on DNA Matches and your match list will be shown.

At 23andMe on the Home Page click on Ancestry at the top of page. On the drop-down list click on DNA Relatives and your match list will be shown.

At Family Tree DNA on the Home Page click on Family Finder Matches and your match list will be shown. At the top beside the box that says All Matches, you can choose an additional display option which condenses the list. You can work with either.

At Living DNA on the Home Page on Family Matching click on the circle with your number of matches and your match list will be shown.

At GedMATCH on the Home Page click on your kit number and use the one-to-many option under Free Tools to see your matches.

The following are Cousin Relationship Prediction tools:

Shared Centimorgan Project 4.0 v4 at: DNAPainter.com. You must register for an account, but it is free. You enter amount of centimorgans shared with a match and it highlights the possible relationships on the chart. Click on the relationship chart and you get the probability for that relationship. You can also input only a percentage if known. You can calculate your relationship to another cousin based on your common ancestor by clicking on "Read more about cousin relationships". Click on "New: with option to add a second amount" if you want to add cMs for you and a match (Helpful if you and a sibling match at different centimorgan amounts). Print out a copy of this chart to have on your desk when working with your matches.

DNA-Sci.org Has a Cousin Calculator (SegcM) that asks for your cM amount and number of segments to narrow relationship possibilities further. You can get predictions for you and sibling to an unknown match using SegcM for Two Siblings. They have a Double Cousin Predictor. AYPR/POH Predictor uses GedMATCH "Are Your Parents Related" tool to predict the closest relationship for your parents. This is a free tool.

Discussion Topics:

Working on the DNA Match Profile Page at Ancestry

The main purpose of working with DNA matches is to determine our most recent common ancestor where you and your match meet.

- Match names can be deceiving. Women may be listed by their married name. If a match uses initials, look to see if the account is managed by someone else and look at their last name. Look at trees, if a match has one, and look at their fathers' surname may give you a hint to the surname (if it's a biological parent). Remember you can be dealing with adopted and NPE matches.
 - Using Age to help determine Generation of Connection and ruling out predicted relationships. Add note about age.
 - Connecting your DNA match to your tree in Ancestry is done on the match's profile page.
 - Adding DNA tree tags for your DNA matches on Ancestry
 - Adding Notes/Comments: Always add some type of note to each match. EX: Common Ancestor name, Research, if you don't know who they are, no matches. Notes are private while Comments are public.
 - Identify Best Known Matches-someone you personally know or have identified in research
 - Identify Brick Wall Matches-they are in your line but unable to connect them
 - Create a Group: Adding colored dots (Labelling) to your DNA Matches at Ancestry, My Heritage, Living DNA. Create groups by Common Ancestor Couple or by Surnames.
 - Editing a Relationship is found on match profile page and selecting from drop down list
 - Viewing the Predicted Relationships for a match at Ancestry (Unweighted only applied to matches under 90 cMs).
 - **Shared DNA**

Shared DNA is the amount of identical DNA that you and a match inherited from one or more recent common ancestors. Using an algorithm called **TIMBER**, we filter out DNA that's not connected to a recent common ancestor, giving you a more accurate estimated relationship.
 - **Unweighted shared DNA**

Unweighted shared DNA is the total amount of identical DNA two people share. This includes DNA that's shared for reasons other than a recent common ancestor, such as two people having the same regions or journeys. Unweighted shared DNA will almost always be larger than shared DNA for distant relationships (people who share 90 cM or less).
 - **Longest segment**

To measure the longest shared segment, we include all unweighted DNA. Since for shared DNA, we filter out DNA that's shared for reasons other than a recent common ancestor, sometimes the longest segment will be longer than the amount of shared DNA for distant relationships.
-
- Comparing your Origins (Ethnicity) with your match
 - Understanding Shared Matches. Start with your top match and work down your list identifying relationships and adding the match to your tree.
 - The Tree tab shows you their tree and common surnames will be shown in green. Shows if you share a common ancestor. It gives you a list of shared Surnames
 - Messaging matches on any site: This can be very frustrating due to unresponsive matches. Keep in mind that some matches look at their results and never open the site again.
 - Using ProTools (additional \$10 month-stop at any time) on Ancestry to sort by the matches top matches. Tool to assist in building out a tree for the match.
 - Using Thrulines as hints on Ancestry: You must have some type of paid subscription and a tree to receive Thruline hints. You will see an icon on a match if you have a common ancestor.
 - Do you want to start documenting matches in a research log? Use a spreadsheet or just a word document. You can also print out the profile page and relationship page and make notes on the back of pages and keep in a binder.
 - Relationships are only predictions. Use your genealogy research to prove your connection
 - Use the Sort and Filter options to narrow down information that will help with identifying matches
 - New, unviewed, matches will have a colored dot next to their name, on your match list

MATCH LIST EXAMPLE ON ANCESTRY:

Linda [Redacted] Compare Invite

Summary | Origins | **Matches** | Traits

All matches | By parent | By ancestor | By cluster **Pro** | By location

[View tree linked to Linda's matches](#) Filter + Create group Search Sort

Full Sibling

	Kathleer [Redacted]	Sister Both sides 2,617 cM 44 - 50% shared DNA	Private linked tree 18,045 people Common ancestor	+ Add ...
--	----------------------------	---	---	-------------------------------------

Close Family

	[Redacted]	Niece Both sides 1,880 cM 27% shared DNA	Private linked tree 18,045 people Common ancestor	+ Add ...
	Sandra [Redacted]	1st cousin Maternal side 1,042 cM 15% shared DNA	Private unlinked tree	+ Add ...
	brianna [Redacted]	Grandniece Both sides 902 cM 13% shared DNA	Unlinked tree	+ Add ...

Annotations:

- Thrulines**: Points to the 'By ancestor' filter.
- Add Color Labelling**: Points to the 'Filter' button.
- cMs and % Shared**: Points to the '2,617 cM | 44 - 50% shared DNA' text.
- Relationship**: Points to the 'Sister' relationship label.
- The Side of Family**: Points to the 'Both sides' text.
- Type Tree Info & Size of Tree**: Points to the tree type and size information.
- Common Ancestor Icon**: Points to the 'Common ancestor' icon.

ANCESTRY MATCH PROFILE PAGE

HE

You and hedgerowst

2nd cousin | Maternal side

4% shared DNA: 254 cM across 9 segments

[View in tree](#)

[Message](#)

[Edit Relationship](#)

[C](#) [G](#) [M](#) [★](#)

Colored Labelling

[+ Add/edit group](#)

[Thom corcoran/Fr](#)

Ethnicity

Notes are private-
Comments are Public

[Trees](#)

[Origins](#)

[Shared Matches](#)

[Pro](#)

I could not identify this high match by her match name. I found out who she was by looking at her tree. Her grandmother and my grandfather were siblings. I sent her a message telling her how I thought we were related. She responded to the message. She gave me wonderful stories and helped to fill in parts of my tree. She has since passed away. I never met her in person. We lived only a couple of towns apart as children.

How are you and hedgerowstudio related?

Common Ancestors

According to Ancestry member trees, these are the common ancestors that connect you and hedgerowstudio. View a common ancestor to see the relationship path that connects you.

hedgerowstudio could be your 2nd cousin through:



Thomas E Corcoran
Great-grandfather
1865-1918
[View Relationship](#)

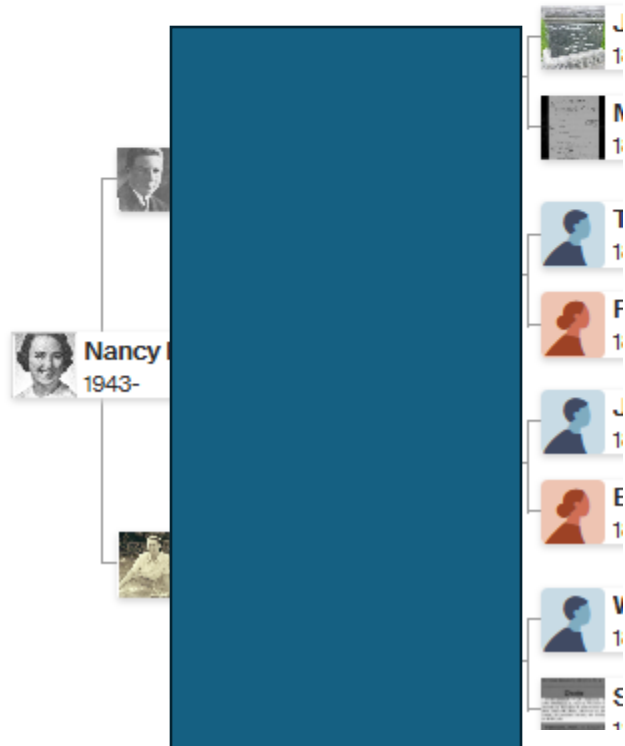


Frances Hannah Gallagher
Great-grandmother
1868-1914
[View Relationship](#)

N Corcoran Family Tree

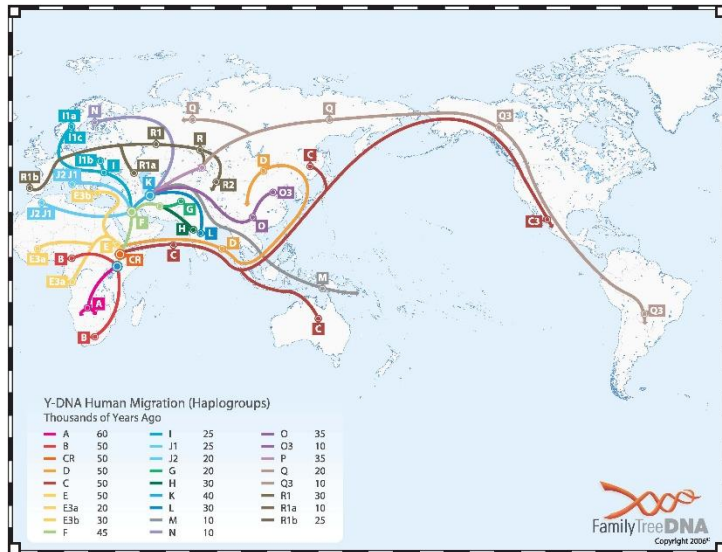
hedgerowstudio's Linked Tree

This is a preview of the private tree linked to hedgerowstudio. Surnames that appear in both your tree and hedgerowstudio's are **green and underlined**.

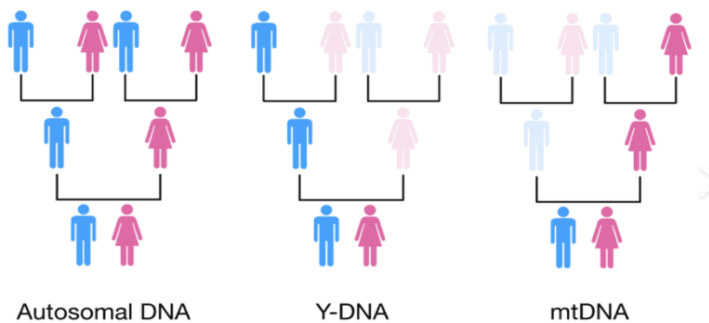


Follow-up to last month's attendees' questions:

A **Haplogroup** is defined as a migration path of our deep ancestral history (back thousands of years ago) of your direct maternal or paternal line. A genetic population group of people who share a common ancestor. Think of it as an ancestral clan such as Vikings, Native Americans (all tribes), Hans, Celts, Aboriginal Australians, etc. Haplogroups are discussed at our Intermediate Group meetings, as the Beginner Group focus is on Autosomal DNA.



DNA Types of Inheritance Patterns



- We receive autosomal DNA from both our parents. 50% from mom, 50% from dad.
- Women can only take the Mitochondrial DNA test because they do not get any Y-dna passed down from their dad. Only sons receive Y-dna.
- Men take a Y-dna test and they can also take a Mitochondrial test to get their mother's Mitochondrial DNA she passed to all her children.

Quick Review of Centimorgans (cMs)

The more centimorgans we share with a match, the closer the relationship we will have with a match.



GGChild Grandparent 1st Cousin Dad

Relationship to You	cM Range	cM Average
Great Grandchild	485-1486	887
Grandparent	984-2462	1754
First Cousin	396-1397	866
Dad	2376-3720	3485

Upcoming Presentations:

- June – Using the Leeds Method to Group your Matches by a Family Line
- July – Ethnicity and Traits

Thank you for attending our Beginners DNA Discussion Meeting.

Please, as always, feel free to reach out to me during the month with questions at kbartera@yahoo.com. Be sure you are on our mailing list.

Our Groups	Time of Meeting
Genealogy Friends of Plano Libraries Great resource for your genealogy needs Have different presentations on various topics	Meet the 3 rd Saturday of every month (In-person or via Zoom) at 10:30 am
Genealogy Friends-Round Table Discussions Genealogy related subjects	Meet the 1 st or 2 nd Thursday of every month (via Zoom only) at 7:00-9:00 pm
Genealogy Friends DNA Special Interest Group Intermediate to Advanced DNA Discussions	Meet the 2 nd Tuesday of every month (In-person or via Zoom) at 7:00-8:30 pm
Genealogy Friends DNA Special Interest Group Beginning DNA Discussions	Meet the 1 st Tuesday of every month (via Zoom only) at 7:00-8:00 pm
For Additional Information check out: Genealogy Friends of Plano Libraries website: www.genealogyfriends.org Be sure you are on our mailing list.	

SEE YOU NEXT MONTH Tuesday, June 2 at 7:00 p.m.