

Genealogy Friends News

Genealogy Friends of
Plano Libraries

Genealogy Friends News
September 2022

P.O. Box 860477, Plano, TX, 75086-0477

Web Page: [http:// www.genealogyfriends.org](http://www.genealogyfriends.org)

Email Address: genfriends@genealogyfriends.org Phone 972-836-9436

Newsletter: Barbara Coakley, email: newsletter@genealogyfriends.org

Schedule of Events

Mark your calendars now for the exciting Genealogy Friends events. Saturday seminars are held at W.O. Haggard Library, 2501 Coit Rd, Plano, TX from 10:15 to Noon.

This Month:

September 17, 2022 - All Day Seminar - Google for Genealogy featuring Lisa Louise Cooke.

Future Events:

October 6, 2022—Zoom Meeting—Genealogy Round Table— We are a group of genealogy enthusiasts who get together to share information and help each other on the first Thursday of each month. Zoom invite will be sent out the week before the meeting.

October 11, 2022 - DNA Special Interest Group - Meets in Genealogy Section from 7-8:30 pm.

October 12, 2022 - Annual Meeting - Details on Page 6

October 15, 2002 - Hybrid Meeting - "You Can Find It In The Archives" by Joan Gosnell from the DeGolyer Library at SMU. We'll meet in the Genealogy Section. The Program Room is setup for early voting.

October 21, 2022 - Lock-In at the W.O. Haggard Genealogy Center see page 7 for details.

November 19, 2022 - Hybrid Meeting- "Finding Your New England Ancestors" by David Appleton

December 17, 2022 - Meeting at Library - Show and Tell

Membership year runs from October 1 to September 30 - It is time to pay dues. See page 2 for details.

Index

Gen Friends Info, Donations, and Volunteer Opportunities	2
Genealogy Education	2
City Directories - More Than A List of Names	3
Sormey on Her Donkey	5
Gen Friends Annual Meeting	6
Genealogy Lock-In	7

Genealogy Friends

Purpose: To educate members and library patrons in doing genealogical research and to support the Genealogy Center of W.O. Haggard, Jr. Library through donations.

Goal: To expand the library collection to meet the needs of this genealogically diverse community.

Genealogy Friends of Plano Libraries, Inc. is a 501(c)(3) non-profit corporation. All donations are tax deductible.

Join us on Facebook - Genealogy Friends of Plano Libraries

The annual membership meeting is held each October.

Genfriends Membership

Our membership year runs from October 1 to September 30. Individual memberships are \$30 a year and family memberships are \$50.

The money we raise is used to pay for programs and to purchase materials for the Genealogy Section at Haggard Library.

Download the membership form on our website <http://genealogyfriends.org/news/> send it in with payment to

Genealogy Friends of Plano Libraries, Inc
PO Box 860477
Plano, TX 75086-0477

Donations

Ancestry donated a world-explorer one year membership and a DNA kit to us for fundraising.

Raffle tickets will be for sale at the September Workshop, October Annual Meeting and October Saturday Seminar. Tickets are \$10 each or 3 for \$20. Drawing will be at the October Saturday Seminar. Proceeds go towards materials for the Genealogy Section at Haggard Library.

So far this year we have donated 46 books to the library. Over the last five years we have donated materials valued at over \$13,000.

Volunteer Opportunities

In order to keep GenFriends going and growing we need your help.

Here are a few positions that we need filled. They don't take much time but make a big difference:

Social Media - We need someone with a grandchild that can help post notices about events on Facebook, Twitter, InstaGram, etc.

Photographer - take pictures at our events to post on the website.

Genealogy Education

The Really Useful Family History Show - Friday and Saturday November 11 and 12 <https://www.fhf-reallyuseful.com/> This is from England. There are webinars and workshops, sessions are recorded so you can watch them if you don't want to get up really early. Cost is £12.

Leaping the Pond: Online Research in Great Britain - Dallas Genealogical Society Fall Seminar. Speaker is Paul Milner. October 22, 2022. <https://dallasgenealogy.org/dgs/meetings-events/seminars/2022-fall-seminar/>

Texas State Genealogical Society annual conference, Unlock Your Past, is November 4-5. **If you are going to register please use the TIPS code for Gen Friends GFPL22.** For everyone who registers we get \$10 contributed to our society.
<https://www.txsgs.org/2022-txsgs-family-history-conference/>

Great Family Search - October 15, 2022 http://greatfamilysearch.com/cgi-bin/waa1gate.dll?WAA_PACKAGE=BDS&WAA_FORM=BDSOptMenu1&C=0000000014A&

City Directories - More Than Lists of Names

By Barbara Coakley

City Directories were created for salesmen, merchants and others interested in contacting residents in a location. In some cities, City Directories date as far back as the 1780's in the U.S. Philadelphia, New York City, Boston and Baltimore were some of the first published. They became more popular as street numbers were used and the cost of printing decreased. Directories enabled businesses to serve customers in larger geographic areas which equated to increased profits. In many cities there were directory libraries that housed City Directories from all over the U.S. that could be used by local businessmen and residents.

The list of residences can include the name, address, occupation, employer, spouse's name. Entries are usually in alphabetical order. Some directories also have a reverse directory that lists names by address. Check the directory to determine when the information was gathered. For example, the information for the City Directory published for the year 1899 may actually have been collected in 1898. By looking at directories for a series of years you can determine:

- When your ancestor moved to or from a location
- When your ancestor died (his widow may be listed)
- When your ancestor reached the age where their name was published (this can include women before they married)
- Who lived at the same address as your ancestor - possible relatives
- What your ancestor's occupation was and possibly who they worked for
- When your ancestor moved to a new address in the city
- Who owned a business
- If there is a reverse directory you can see who the neighbors were

Franklin av.
Brewster & Hall, (T. H. Brewster and C. L. Hall)
fruits and game 303 N. 12th
Brey Charles, clk. Mullanphy E. R. Co. r. 1125 Locust
Brey Della M. teacher High school, r. 1511 Washington av.
Brey Ernst, teacher, 519 Chestnut. r. 618 N. 11th
Brey Kate, wid. John. r. rear 816 S. 2d
Brey W. S. C. sec. Mullanphy Emigrant home, r. 1125 Locust
Brian Menus, lab. r. 2314 Division
Briard Benlot, physician, r. McNair av. bet. Victor and Gravois rd.

Charles and WSC Brey live at the same address and both work at the Mullanphy Emigrant home. What is their relationship? What is the Mullanphy Emigrant home? And where is it?

ABBREVIATIONS.

adv	advertisement	mach	machinist
agri lmpts	agricultural implements	mdse	merchandise
agt	agent	mess	messenger
appr	apprentice	mfr	manufacturer
archt	architect	mgr	manager
archt	association	mkr	maker
asst.	assistant	mkt	market
att.	attorney	motor	motorman
av.	avenue	mus tchr.	music teacher
b	boards	n	near
baggage	baggage master or man	ne	north east
bartdr	bartender	nr.	north
bdgh	boarding house	ns.	north side
bgh	between	nw.	north west
bkbndr	bookbinder	opp	opposite
bkbndr	bookkeeper	opr	operator

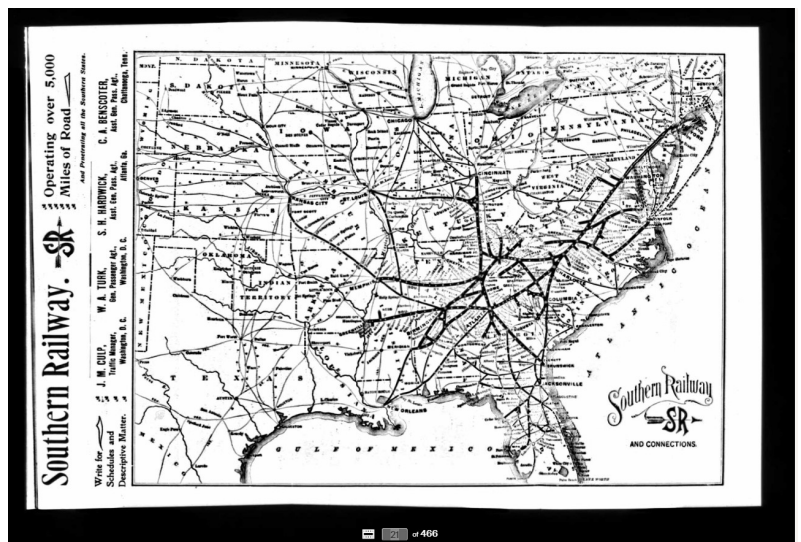
There were a lot of abbreviations used in the resident listings. Check the directory index, usually there is a list of abbreviations included.

In the resident list, some of the entries are printed in bold or larger print. These are entries for subscribers who paid a fee.

Often there are pages of Additions, Alterations, Corrections at the beginning. Check these to see if there are late entries for your ancestor.

This is all great information but City Directories but there is much more.

- Background information on the location - population growth, changes in the city, statistics about commerce, schools, etc.
- Railroads - information on routes and maps.
- Lists of churches, cemeteries, schools, newspapers, fraternal organizations, societies,



City Directories

hospitals, libraries, asylums, orphanages, work houses, banks, courts, fire departments, police stations, post offices, etc. - all of them clues to other records to look for to gather information about your ancestor. Locate your ancestors address on a map and use the lists to find the nearby church and school. Use the list of newspapers published that year to find articles about your ancestor, prices of goods, weather, current events, etc.

- Advertisements include businesses, schools, hotels, newspapers, etc. Look for an add for something related to your ancestor. I found an add for the private school my grandmother attended that listed the courses available to students.

- Don't just search for your ancestor's name, read the directory.

There are numerous collections of City Directories available online.

- Ancestry - "U.S., City Directories, 1822-1995"
<https://www.ancestry.com/search/collections/2469/>
- Digital Public Library of America
<https://dp.la/search?q=city%20directories>
- Google Books <https://books.google.com/>
- Hathi Trust <https://www.hathitrust.org/>
- Internet Archive <https://archive.org/search.php?query=directory>
- Cyndi's List <https://www.cyndislist.com/directories>
- Library of Congress <https://www.loc.gov/search/?in=&q=city+directory&new=true>
- Online Historical Directories <https://sites.google.com/site/onlinedirectorysite/Home?authuser=0>
- FamilySearch - Search the catalog for a place then look for Directories. <https://www.familysearch.org/en/>
- MyHeritage <https://www.myheritage.com/research/collection-10705/us-city-directories>
- Don's List <http://www.donslist.net/PGHLookups/Dir1Win.shtml>
- City Directories of the U.S.A <https://www.uscitydirectories.com/>
- Do a Google Search for the location + City Directory. Universities and libraries have digitized collections of directories.
- Not everything is online. The Library of Congress has a Research Guide. <https://guides.loc.gov/united-states-city-telephone-directories/city-directories>

City Directories are a great resource to learn more about our ancestors and where they lived. Enjoy exploring them.

YOUNG LADIES'
Academy of the Visitation.

CASS AVENUE, ST. LOUIS, MO.
Street Cars Pass the Door.

This establishment, occupying an elevated, healthy and beautiful site, on the North-western side of the City, offers the advantages of ample grounds, an extensive and commodious range of buildings, and such facilities for exercise and recreation as may conduce to the health and happiness of its youthful occupants.

The Course of Instruction Comprises:

ORTHOGRAPHY, READING, WRITING, ARITHMETIC,
GRAMMAR, ANCIENT AND MODERN GEOGRAPHY,
THE USE OF GLOBES, PROSE AND POETICAL
COMPOSITION, SACRED AND PROFANE HISTORY,
MYTHOLOGY, EPIGRAPHIC, CRITICISM, LOGIC,
MORAL, INTELLECTUAL AND NATURAL PHILOSOPHY,
CHEMISTRY, ASTRONOMY, BOTANY, ALGEBRA, GEOMETRY,
BOOK-KEEPING, FRENCH, GERMAN, SPANISH AND LATIN LANGUAGES,
MUSIC ON THE HARP, PIANO FORTÉ, VIOLIN,
GUITAR AND VOCAL MUSIC; DRAWING AND
PAINTING IN OIL, WATER COLOURS, PASTEL,
AND ON VELVET; PLAIN AND ORNAMENTAL
NEEDLEWORK, TAPESTRY, EMBROIDERY,
AND LACEWORK.

Those charged with the immediate supervision of the young ladies will be vigilant in requiring an exact observance of the rules of the Institution, and a strict attention to polite and amiable deportment. In the course of the Academic year, two examinations take place—the first in December, the second in June. At the close of the former, a semi-annual report is transmitted to the parents of the young lady, giving an account of her proficiency in her studies, etc. The young ladies are at the end of each month assembled in presence of their teachers when a report is made of their advancement in their studies, and their attention to the rules of the school.

Salary, 720

Mullanphy Emigrant Relief Fund.
COMMISSIONERS.

Henry F. Vahlkamp, First Ward, 3456 Carondelet av.
Woldemar Fischer, Second Ward, r. 1929 Linn st.
Julius H. Hertter, Third Ward, r. 923 Winter st.
John G. Priest, Fourth Ward, r. 1003 Chouteau av.
Henry J. Alles, Fifth Ward, r. 910 Market st.
Joel G. Harper, Sixth Ward, r. 1001 Olive st.
J. Phillip Krieger, Seventh Ward, r. Garrison av. sw. cor. Franklin av.
James Sweney, Eighth Ward, r. 913 N. Thirteenth st.
Edward Quinlivan, Ninth Ward, r. 1614 Biddle st.
Louis Espenschied, Tenth Ward, r. 813 Hempstead st.
James B. Clemens, Eleventh Ward, r. Cass av. bet. 21st and 22d sts.
David C. Marsh, member, Twelfth Ward, r. 420 N. Second st.
Joseph Brown, mayor, *ex-officio*, r. 948 Chouteau av.

OFFICERS.

President—John G. Priest
Vice-President—James Sweney
Secretary—W. L. C. Brey, r. 1125 Locust st.
Agent—V. J. Peers, r. 214 N. Thirteenth st.
Physician—Dr. William Drechsler, r. 1027 North Market st.
Steward—John Engel, "Home," Fourteenth and Mullanphy sts.
Matron—Mrs. Louise Engel, "Home," Fourteenth and Mullanphy sts.

COMMITTEES.

Auditing Committee—Julius H. Hertter, Joel G. Harper and Edward Quinlivan
Leasing Committee—Louis Espenschied, Henry J. Alles and J. Phil. Krieger
Finance Committee—J. Phil. Krieger, J. H. Hertter and Louis Espenschied
Building Committee—Henry F. Vahlkamp, James B. Clemens and Woldemar Fischer
Emigrant Home Committee—Henry J. Alles, David C. Marsh and James Sweney
Mullanphy Home, Fourteenth and Mullanphy sts.

Info on the Mullanphy Emigrant Relief Fund where WLC & Charles Brey worked.

Stormey On Her Donkey

Traces of Texas

On Facebook

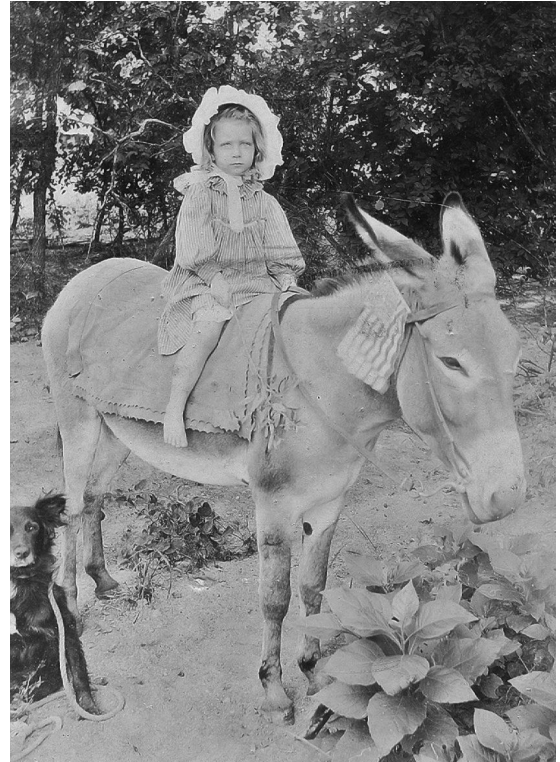
Submitted by Barbara Brogdon

Traces of Texas reader Pete Hagan sent in this nice 1935 photo of his mother, Colene "Stormey" Brown, on her donkey in Bonham Texas.

She was about 4 years old. According to Pete, "she rode this donkey to school when she got old enough and one day a boy put burrs under the blanket. When she mounted the donkey bucked her off.

She beat the laughing boy up so bad she broke his arm earning her the nickname Stormey." I love her expression.

Stormey looks kind of fierce. I wouldn't want to trifle with her!



of

A Potpourri of Websites

Draw IO is a website where you can draw family trees online or download the software to use on your PC. <https://app.diagrams.net/>. I use it to draw out family trees to determine how my dna matches fit together.

The **Library of Congress** has added a tool to help locate Sanborn Fire Insurance Maps in their digital collection. There are just a few large cities available currently but they are adding more.

<https://www.arcgis.com/apps/instant/media/index.html?appid=0cb2c04324a0413081e1b793ea18f854&loclr=blogmap>

U.S. Citizenship and Immigration Services have historical records available from their Genealogy Program. There are fees to access these records and most of them were generated for immigrants in the 1900's.

<https://www.uscis.gov/records/genealogy/historical-records-series-available-from-the-genealogy-program>

Goldie May is a chrome extension with tools to help with research. There are three levels. There are videos available to show how the tools work. The tools include an Automatic Research Log, Collection Hints. Google "What is Goldie May" for articles about how to use it and it's value. <https://www.goldiemay.com/>

Scrivener is a tool that was built for writers. <https://www.literatureandlatte.com/scrivener/overview> It is well suited to writing about your family history. You can write stories about different aspects of a person's life in any order, store them and combine them into a manuscript that can be exported into Word. Gwen Hernandez offers classes in using Scrivener. <https://scrivenerclasses.com/> Kimberly Powell's class Master Your Genealogy with Scrivener is another option. <https://levelupgenealogy.com/mastering-scrivener/>

Annual Meeting

Genealogy Friends of Plano Libraries Annual Meeting

October 12, 2022

6:00 - 8:00 pm

**Outback Steakhouse
1509 North US 75 - Central Expressway
Plano, TX 75075**

\$30 per person includes the menu and gratuity.

Salad, Entrée with one side, Dessert and Beverage
Alcoholic Beverages are extra.

Menu

Salad Choices

House Salad or Caesar Salad

Entrée Choices

Outback Special - 6 oz Center Cut Sirloin

Chicken on the Barbie - Grilled Chicken Breast

Perfectly Grilled Salmon - 8oz Filet of Salmon

Veggie Plate - Broccoli, Squash, Carrots, Baked Potato and Asparagus

Sides

Homestyle Mashed Potatoes, Mixed Veggies, Sweet Potato or Baked Potato

Dessert

Cheesecake with Raspberry or Chocolate Sauce

Your order will be placed at the restaurant the night of the meeting.

Please R.S.V.P. to genfriends@genealogyfriends.org prior to October 10th

Make checks payable to Genealogy Friends of Plano Libraries. You can pay at the door.

2022 Genealogy Lock-In

Where: W.O. Haggard Library, 2501 Coit Road, Plano, Texas

When: October 21, 2022

Program of Events

9:30-10:30 am - Deciphering Handwriting in Genealogical Records by Joseph B Everett, MLS, AG, Family & Local History Librarian (BYU Library)
Difficulty Intermediate

10:40-11:30 am - Improve, Expand, and Enrich your Family Tree - With Tax Records by Doug Waggoner, Family Historian
Sponsored by Waco-McLennan County Library
Difficulty Beginner

11:40-12:40 pm - Choosing Genealogy Services & Software by Tony Hanson, Family Historian
Difficulty Intermediate

**Lunch**

2-3:10 pm - Building and Researching Your Family Tree by Bill Buckner and Hannah Kubacak, Genealogy Center (Waco-McLennan County Library)
Difficulty Beginner

3:20-4:10 pm - Citing Sources Without Stressing Out by Amy Johson Crow, MLS, founder and lead educator at Generations Connection, host of Generations Café podcast
Sponsored by Denton Public Library
Difficulty Beginner

4:20-5:10 pm - Making the Allen County Public Library Genealogy Center Your Research Assistant by Curt B. Wicher, MLS, FUGA, IGSF Manager
Difficulty Beginner

50 Minute Break

6:00-7:15 pm - How to Approach and Solve Brick Wall Problems with DNA by Sara Allen, Senior Librarian, Allen County Public Library, Genealogy Center
Difficulty Intermediate

7:30-8:30 pm - United States Migration Patterns: Why They Left, Where They Went, and the Stories They Left Behind by LeAnne McCamey, professional genealogist, publisher, author, and the owner of American Genealogical Research Services
Sponsored by Waco-McLennan County Library
Difficulty Intermediate