



Genealogy Friends News

Genealogy Friends of
Plano Libraries

Genealogy Friends News
May 2021

P.O. Box 860477, Plano, TX, 75086-0477

[http:// www.genealogyfriends.org](http://www.genealogyfriends.org) <http://genfriends.blogspot.com/>

Email Address: genfriends@genealogyfriends.org Newsletter: Barbara Coakley newsletter@genealogyfriends.org

Phone 972-836-9436

Schedule of Events

We are holding our meetings via Zoom

Mark your calendars now for the exciting Genealogy Friends events. Meetings will be held via Zoom until further notice from 10:15 to 12:00. Invites will be send out the week before the meeting.

This Month

May 15, 2021—Zoom Meeting—”Brick Wall Breakthroughs” by Thomas MacEntee. **Requires pre-registration, we are using the speakers Zoom account. Email newsletter@genealogyfriends.org for the link.**

Future Events:

June 3, 2021—Zoom Meeting—Genealogy Round Table—We are a group of genealogy enthusiasts who get together to share information and help each other on the first Thursday of each month. Zoom invite will be sent out the week before the meeting.

June 19, 2021 - Zoom Meeting - "30 Websites Every Genealogist Should Use" by Emily Richardson

July 17, 2021 - Zoom Meeting - "Forensic Genealogy" by Colleen Fitzpatrick. **Meeting will start at 11:00 am to accommodate the Speakers Schedule**

August 21, 2021 - Zoom Meeting - "Context! How to Find It. How to Use It." by Jill Morelli. **Meeting will start at 10:00 am to accommodate the Speakers Schedule.**

September 18, 2021 - Zoom Seminar - Judy Russell will be our speaker for two sessions. More information coming soon.

Index

Genealogy Education and News	2
William J Murphy Home, 1874	3
Sanborn Fire Insurance Maps	4

Publications for Sale

The following are available from Genealogy Friends:

Public Land Survey Systems	\$5
Plano Star Courier Index 1904-1910	\$20
Plano Star Courier Index 1911-1917	\$20
Cemeteries of Collin County, TX	\$40
Collin County, TX Voter Registration Index 1867	\$20
Place Names of Collin County, TX	\$10
Railroads in Collin County, TX	\$10

Genfriends Membership

Our membership year runs from October 1 to September 30. Individual memberships are \$30 a year and family memberships are \$50.

The money we raise is used to purchase materials for the Genealogy Section at Haggard Library.

Download the membership form on our website <http://genealogyfriends.org/news/> send it in with payment to

Genealogy Friends of Plano Libraries, Inc
PO Box 860477
Plano, TX 75086-0477

Genealogy Education & News

Vivid-Pix software is available at a discount and GenFriends earns money with every purchase. Email newsletter@genealogyfriends.org for the link to purchase Restore for \$39.99 and help raise money to purchase materials for the Genealogy Section of the library.

Conference Keeper - find online and virtual events <https://conferencekeeper.org/>

Many genealogical societies are offering their programs via Zoom, check those in the area where your ancestor lived. Here are just a few:

TIGR—Texas Institute of Genealogical Research has four tracts in 2021. June 13-18. There are three tracts with space still available. **DNA Fundamentals for Genealogy** - Patti Lee Hobbs, **From Spanish Rule to Republic: Research in the Lone Star State**, - Kelvin Meyers and Colleen Robledo Greene and **African Americans in the South** - Ari Wilkins. Register for virtual institute <https://www.txsgs.org/texas-research-institute/>

The Dallas Genealogical Society's Summer Seminar is Dr. Thomas W. Jones "**Write It Up!**" July 9-10th <https://dallasgenealogy.com/dgs/meetings-events/seminars/2021-summer-seminar-2/> If you are thinking about writing your family stories, this is a great opportunity to sharpen your skills.

Empire State Exploration by New York Genealogical and Biographical Society
August 16-18, 2021 <https://www.newyorkfamilyhistory.org/events/empire-state-exploration-summer>

New York State Family History Conference "**NYSFHC @ Home**" on demand and live sessions in September, 2021. <https://www.newyorkfamilyhistory.org/nysfhc#schedule>

Utah Genealogical Society "**Summit of Excellence**" September 15-18, 2021
<https://ugagenealogy.org/page.php?pt=586>

Fox Valley Genealogical Society "**Path to America: Immigration Records & Roadshow**" September 25, 2021
<https://ilfvgs.org/education/conference/>

Some institutions are doing expanded lookups and will provide copies of records. Look for a research request form or rules for lookups on their websites and requests. Explore the online catalog and submit your requests, you never know what research question you might be able to answer.

William J Murphy Home, 1874

Submitted by Barbara Brogdon

Courtesy Wylie Area Heriitage by Beb Fulkerson.

The town of Murphy was named for William J. Murphy, who arrived in 1853 via wagon train from Morgantown, Indiana. On the trip, other than his family, were brother Eli who settled near where the Meadows Baptist Church is located at Plano and had a store there before moving westward to California, the McCreary family, the Campbell family for whom Campbell Road is named, and Murphy's sister and family, Susan and L.D. Emberton. A daughter, Susan, would recall that the first thing put into the wagon when they headed for Texas was a pie safe, which was a large cabinet with perforated tin panels for food and utensil storage.



Born May 27, 1816 in North Carolina, William was the son of Nancy Ledbetter and James Murphy. They took him to Indiana as a child. In

1841 he married Dorothy Hudiberg (born July 31, 1818 in Tennessee and died January 11, 1899 at Murphy).

Their eleven children were Sarah Kate, James T, Susan, Nancy Ellen, William J, Franklin Pierce, Pleasant William, Mary, Ann E, Dorothy and John Henry Murphy.

When William Murphy came to this area, the prairies were dotted with high grass and wild game. A great hunter, Murphy said that at night hunters put lamps on their heads to hunt game.

For many years he raised horses and cattle, as well as farm. He owned many acreage around the Murphy area. It was he who gave the railroad right-of-way so that it may go through the town.

In his latter years he was known by practically everyone as "Grandpa Murphy." Mr. Ed Woods once recalled that "Grandpa Murphy owned a store in Wylie. That was when it took ten yards of material to make a dress. Now you can get ten dresses out of a yard."

After the death of his wife, Murphy moved into the home of his daughter and family, Susan and J.L. Moulden. A very healthy Democrat, he continued to attend the Christian Church and to read his Bible daily without glasses. Murphy was almost 93 years old when he passed away January 29, 1909. He is buried beside his wife, Dorothy, in the Moulden Cemetery.

Photo: Standing beside the W. J. Murphy home, which was constructed in 1874, are William Murphy, his wife Dorothy and a son, John.

Sanborn Fire Insurance Maps

by Barbara Coakley

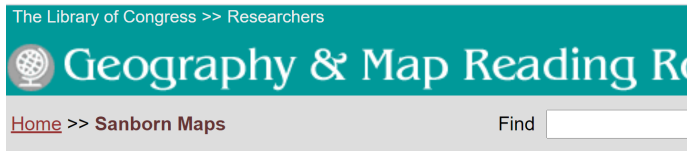
Sanborn Fire Insurance Maps date from 1867 to the present and depict the commercial, industrial and residential sections of over 12,000 cities and towns. They were created to help insurance companies assess their risk so they show the size, shape and materials that structures were constructed from as well as locations of windows, doors, sprinkler systems, and types of roofs. The maps also show street names, property boundaries, and house and block numbers. There are insurance maps that pre-date the Sanborn maps made by other companies. The Introduction to the Sanborn Map Collection includes historical information on the maps <https://www.loc.gov/rr/geogmap/sanborn/san4a1.html>.

The Library of Congress has the largest collection of Sanborn Maps and many are available on their website <https://www.loc.gov/collections/sanborn-maps/about-this-collection/>.

Each map has a key, the colors show the building materials - pink is a brick building, yellow is a wood structure, blue is concrete or cinder block, green is fire resistant material, gray is used for metal or iron building materials.

The atlas for larger cities begins with a title page that shows an index of which parts of the city are on which map. Some of the maps include a street index.

To find the maps on the Library of Congress website go to the search page <https://www.loc.gov/rr/geogmap/sanborn/> and enter the state.



The list of cities and towns will be displayed.

Click on the one you want to view.

Sanborn Fire Insurance Maps

Search by:

Countries (excluding United States)

-- Select a Country --

Please note: There are over 50,000 hits for **United States** in this database. Browse U.S. maps by state using the form below.

U. S. State

Illinois

Building Types

-- Select a Building Type --

Full Text Fields (city, county, other geographic areas)

Enter Keywords All full-text fields



Sanborn Fire Insurance Maps

Fire Insurance Maps of Illinois

Cities of Illinois

A red asterisk * means that one or more maps for the city are available online.

Abingdon *	Albion *
Aledo *	Alexis *
Algonquin	Altamont *
Alton *	Altona *
Amboy *	Anna *

The maps available will be listed.

Click on the map you want to view.

The entire city might not be on each map.

Sanborn Fire Insurance Maps

Fire Insurance Maps of Illinois : Waterloo (Monroe County)

[Return to Illinois Cities](#)

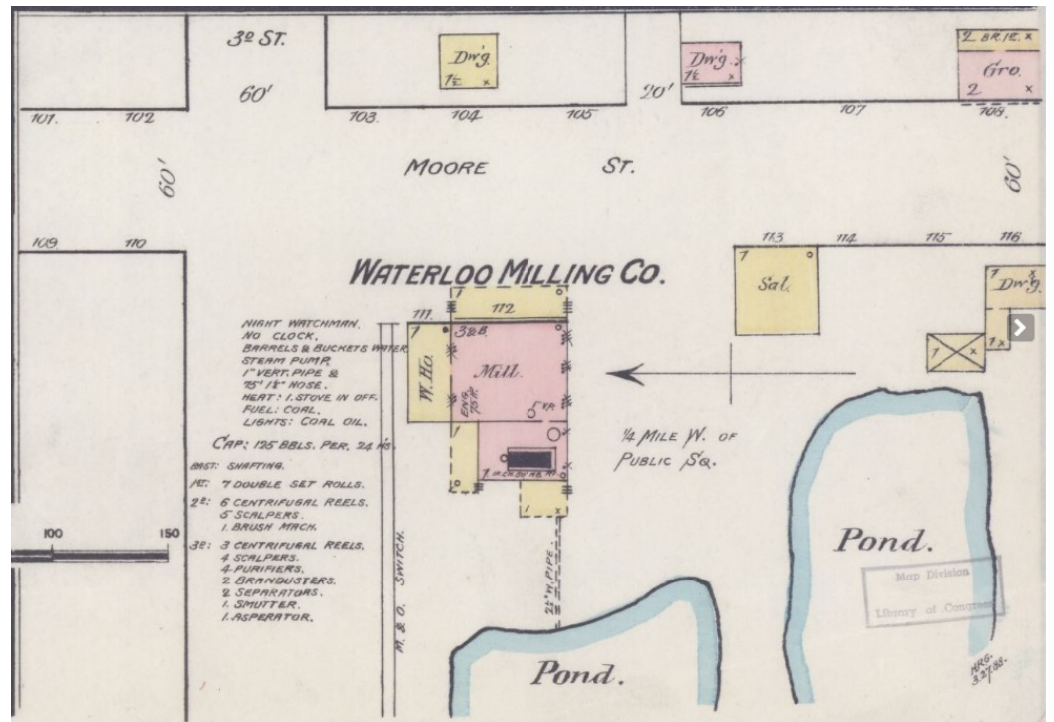
Dates	# of Sheets	Other geographic areas included:	Comments	URL
Mar 1888	2			https://hdl.loc.gov/loc/gmd/g4104wm.g022131888
Apr 1894	3			https://hdl.loc.gov/loc/gmd/g4104wm.g022131894
Dec 1899	5			https://hdl.loc.gov/loc/gmd/g4104wm.g022131899
Jan 1906	7			https://hdl.loc.gov/loc/gmd/g4104wm.g022131906
Oct 1913	8			https://hdl.loc.gov/loc/gmd/g4104wm.g022131913
Nov 1928	9			Not available online.
Nov 1928 - Jul 1938	9		534	Not available online.

Sanborn Fire Insurance Maps

Here is the map for my Great Grandfather's mill from 1888. The structures are pink and yellow so they are built of brick and wood.

The map includes information about the mill. There was a night watchman, the capacity was 125 barrels per 24 hours, there was a steam pump there as a heat stove in the office fueled by coal, lights were powered by coal oil. There were 7 double set rollers on one machine. 6 centrifugal reels, 5 scalpers, 1 brush machine on the second, and 3 centrifugal reels, 4 scalpers, 4 purifiers, 2 brandusters, 2 separators, 1 smutter and 1 aspirator on the third.

It provides a picture of the business that isn't available anywhere else.



Sanborn Fire Insurance Map from Waterloo, Monroe County, Illinois. Sanborn Map Company, Mar, 1888. Map. Retrieved from the Library of Congress, <www.loc.gov/item/sanborn02213_001/>.

Residential properties were also included on the maps. This map shows block 7 of Town of Waterloo, Paul Brey and his family lived at 124 Mill Street. The property includes a brick dwelling with wooden structures behind it.

Sanborn maps are also available at the following websites:
Perry-Castaneda Library Map Collection

<http://legacy.lib.utexas.edu/maps/sanborn/d.html>

PennState University Libraries

<https://libraries.psu.edu/about/collections/sanborn-fire-insurance-maps>

Ohio Web Library

<https://sanborn.ohioweblibrary.org/?t=infohio>

Cyndis List <https://www.cyndislist.com/maps/fire-insurance/>

Google Fire Insurance Maps and the Location you are searching.

The fire insurance maps used in conjunction with deeds, land ownership maps, and newspapers help create a picture of our ancestor's property and provide information that might not be available from any other source.

